



The
Golden Age
has Returned



Jumeirah
ZABEEL SARAY
DUBAI



Welcome to Jumeirah Zabeel Saray



I am delighted to extend a warm welcome to you to Jumeirah Zabeel Saray, a resort inspired by the opulent palaces of the Ottoman period. This book has been created to offer you a glimpse into a different world, a world of awe-inspiring architecture and detailed patterns and motifs of a bygone era.

Located on the wondrous Palm Jumeirah, this spectacular resort has been designed to envelope you in a world of luxury. With exhilarating surroundings and breath-taking views combined with the array of dining, leisure and spa options, we are continuously striving to ensure your stay creates memories to last a lifetime. Visit Talise Ottoman Spa where the grandiose Turkish hammam offers a truly authentic relaxing experience or soak up the sun and immerse yourself in the calm waters of the infinity pool. Savour global flavours from Vietnam to India, Turkey to Lebanon in one of our exquisite restaurants or be entertained in Mehteran Theatre and Show Centre.

Whatever your pleasure is, I hope this book will serve as your personal guide while you step back in time to a Golden Age at Jumeirah Zabeel Saray.

Sincerely,

Stephan Schupbach
General Manager





Jumeirah Zabeel Saray Hotel, Jumeirah, Dubai



The Golden Age has Returned

Inspired by the magnificent era of the Ottoman Empire, Jumeirah Zabeel Saray is a celebration of an age renowned for its wealth of art and culture. Palatial in style, Turkish crafted marble and ornate crystal chandeliers compete for your attention, as do the hand-painted ceilings, murals and Oriental art. Together, they create a visual showcase reminiscent of a beautiful era.

Situated on the West Crescent of Palm Jumeirah in Dubai, one of the most famous landmarks in the world, the stunning resort will overwhelm you with its attention to detail and architectural beauty. Experience a journey back in time to a golden age where an era of enlightenment and luxury combine to create a truly unique experience at Jumeirah Zabeel Saray.

Continue your sensory journey and enjoy the warm breeze as you bask in the views from your balcony of the azure waters of the Arabian Gulf or savour a meal, alfresco style, in one of ten world-class restaurants. At the Talise Ottoman Spa, one of the most extensive spas in the region, the wide choice of treatments and the unique setting, including the traditional Turkish hammam, will leave you relaxed and refreshed.





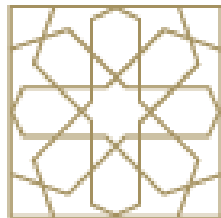
Entering a surreal world full of wonders



A World of Opulence Awaits

A legendary location, Jumeirah Zabeel Saray does not fail to impress even before you arrive at the resort. The turquoise, tranquil waters of the Arabian Gulf lap gently against the shores of the West Crescent to set the tone for the ultimate luxurious experience.

Saray, meaning grand palace, more than lives up to its name starting from the moment you arrive at the awe-inspiring entrance of Jumeirah Zabeel Saray. Dazzling guests with its walkway of gentle, calming water features, the approach leads to an opulent archway threshold. Enhanced with delicate engraving inspired by this historical period, the renowned creativity of the era is reflected once again in the perfectly formed, symmetrical motifs adorning the palace on either side.



An authentic Arabian geometric shape that hails from the eight-point geometric style and stands for the Islamic artistry. The uniqueness of this renowned shape makes it a recognizable symbol of Islamic and Arabian art.



Traditional motifs marry a modern idiom to create an impressive entrance.



A Welcome Fit for a Sultan

A visual showcase of history which lasted seven centuries, the Golden Age of the Ottoman empire is nowhere better reflected than in the lavish lobby of Jumeirah Zabeel Saray. Look up to admire the arresting grey and white striped stone supported by large, golden pillars or admire the crystal chandelier which was specially designed for the resort. Interrupted only by the Orientalist art, drawing the admirer in with its historic brush-strokes, guests can enjoy a complete sensory experience as the gentle live music acts as a soothing backdrop.

Whether you are checking in with our warm and efficient guest relations team, booking an Arabian experience with our knowledgeable concierge, or simply enjoying a connoisseur's collection of teas and coffees in the Sultan's lounge, the grandeur of the lobby is impossible to resist.



An Islamic symbol that originates from the motifs created in the Islamic Seljuk era which prospered in Turkey and left behind a rich creative heritage. Like many Islamic shapes, its spiritualism also inspired from nature, in particular the floral shape.

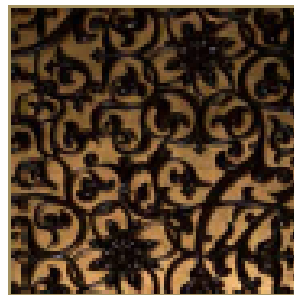
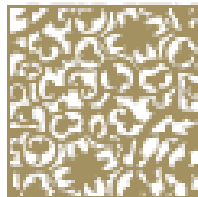


A place to indulge in elegance.



Dreams of the Orient

Whether it is a stay in one of the Deluxe Rooms or a choice to indulge in one of the Imperial Suites offering exclusive floor and lounge access, a traditional Turkish-inspired haven awaits. Technology is discrete yet accessible ensuring you are kept up to date. Innovative features such as the anti-static material of the headboard, to ensure the highest levels of hygiene combine with traditional elements such as the large bathrooms characterised by the over-sized Turkish marble baths. With all 406 guest rooms and suites offering stunning ocean views, refresh and revive the natural way by relaxing on your private balcony. The restful ambience, created by the harmonious combination of design and colour, is the perfect tonic for a peaceful slumber.



An archetypal Suljok symbol that stands for the continuity of life and the unity of nature's elements. This shape was adopted from the *Band Esmi* and the natural process of the intertwining of leaves and flowers. Although the Seljuk Empire only lasted for around a century, it left behind an opulence of rich and fine artistic shapes.



A Culinary Haven

A dining experience at one of Jumeirah Zabeel Saray's ten restaurants is more than just a meal; it's a journey to a different world. Each has been designed to captivate, from the collection of exquisite signature restaurants such as Amala, offering refined, authentic Northern Indian dishes to the choice of casual restaurants for a more relaxed affair, notably Imperium, serving international cuisine with a French twist.

Every detail has been considered to capture the essence of a different era. The romance and beauty of the French colonial Southeast Asia of the 1920s is reflected in the glittering chandeliers at VO, the Colonial French Vietnamese restaurant.

The walls and ceilings, made of richly crafted wood in Al Nafoora, echo the traditional Lebanese mystique. Hand-painted murals adorn the walls in Lakeside Dubai's first Anatolian restaurant, creating a tapestry of colour to recreate the spirit of a bygone era. Such creativity is attributed to the fifty artists who were especially flown in to create all of the murals throughout the resort.

After hours, mingle in a choice of bars such as the sophisticated, stylish Yoda Bar or for a more low-key affair, relax to the soft tones of jazz in the atmospheric, colonial-style C Club. Whatever you desire, as our guest, soak up the ambience where superb service and creative cuisine come together to provide one of the most memorable dining experiences.



A great example of Islamic geometric design, this symbol like many other Islamic symbols is also borrowed from the natural world. It symbolizes floral elegance, and conveys a pattern that underlines the right with well-balanced perfection.



Immerse and Indulge

Immerse yourself in the serenity that is Talise Otoman Spa. Aptly named, ancient palaces of this imperial period have influenced the design to create one of the most mesmerising and extensive spas in the Middle East. Step back in time and be enthralled by the ornately carved doors, the crafted marble and the stunning murals, all of which are complemented with a touch of cool turquoise.

Honouring a timeless tradition are the unique, signature facilities of the spa and Turkish hammam. Throughout history, the hammam was used as a meeting point not just for bathing but for relaxing, meeting friends and celebrating special events. Bringing the historical standards of a Sultan's hammam to present day you can revel in this age-old custom which has been cherished for centuries.

Heritage meets innovation to create a portfolio of treatments from the traditional Thai massage in private suites to the extensive hydrotherapy options including Vichy showers, hydrotherapy baths and dry flotation beds. Covering 8,000 square metres including features such as the outdoor Thai Gardens and the Snow Bath, Talise Otoman Spa has been carefully designed to ensure every element has been considered.

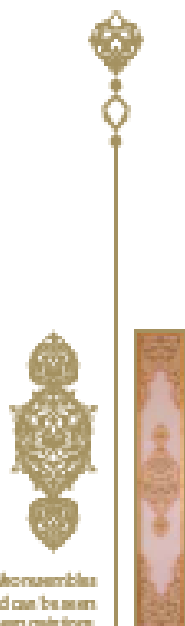


This Islamic style is based on a two-point geometrical design that has been duplicated to create a pattern, generally unique to create a refined motif which reflects power and intelligence. This creates a sense of a distinct Islamic spirit that can be easily distinguished.



A World of Light and Colour

An event at Jumeirah Zabeel Saray will leave guests talking for years to come. It's not just the amazing décor, the highlight of which is the amazing hand-painted mural or the highest levels of service and expertise. Nor is it simply the variety of options which include the tiered 780-guest Mehteran Theatre and Show Centre and the made-for-a-movie-star screening room. It's all of these elements, and so many more, which come together allowing you to add that extra dynamic, culminating in a spectacular show that reflects the warmth of generous hospitality and the richness of magical creativity.





Embrace Nature

Appreciate the tranquility at the resort's private beach and harmonise yourself with your surroundings while revelling in personalised beach butler service. Seamlessly blending into the sea, the vast infinity pool is the perfect way to enjoy Dubai's year round sunshine and soak up the rays. For the more energetic, the water sports centre helps you feel at one with nature as you sail, windsurf or kayak across the gentle waters of the warm Arabian Gulf.



The Otoman culture redefined many architectural elements and added their touch to it, among the most important of these elements were arches. Otoman results are a realisation of the perfect aesthetic balance that pleases the eye and creates an ambience of grandeur.



Avenue of Indulgence

Dubai is considered to be one of the shopping capitals in the world which is why we have a dedicated avenue of luxury brands, offering some of the finest gifts, accessories and jewellery. Interrupted only by inviting lounges and a selection of restaurants and bars, a stroll along the Avenue will take you down a passage in time as each boutique is enveloped with decorative archways, high ceilings, striking chandeliers, and over-arching bridges. Elegance and art combine to create a high-end shopping destination.



Jali translates to "pier perforation". Although essential for out of the wind to keep the sun out while preserving the ability to allow air in, these patterns are made up of intricate beauty that when permeated by the rays of the sun creates shadows to be admired by the eye.



Living Luxury

For those more inclined for a long-term stay, Jumeirah Zabeel Saray's four and five bedroom Royal Residences, are the epitome in luxurious living. Spacious yet discerning, step directly out into the lagoon for a morning swim or the beach for a morning walk, followed by a sumptuous breakfast on the outdoor terrace, should you choose. Each residence is adorned with the traditional motifs and patterns of a bygone era to create a luxurious, welcoming haven nestled on an island of paradise.

The spirit of this glorious decadent period, dedicated to the finer things in life, is ever-present, with a personalized 24-hour butler service ensuring every request is discreetly and efficiently taken care of. Tailored to every guest, unparalleled service is at the heart of your stay. The only difficulty you may face is choosing which residence. Will it be the beach, lagoon or seafront? And for those who simply cannot decide, the finest Imperial Residence will help make the choice easy.



Jali (jālat al-ḥamal) is an authentic Islamic geometric pattern. The perfect scale and proportions can be seen in the well-balanced composition of the design, where the floral shape in the center blends into the surrounding squares in perfect harmony.



Exclusive Socialising

The Club lounge is a testament to authentic Ottoman culture with wall hangings telling a tapestry of history and carefully chosen art reflecting a series of beautifully illustrated stories, most of which have been created by Ismail Acar, one of the most famous and successful artists in Turkey. It's easy to lose yourself in the grand surroundings that make up this exclusive lounge as you acquaint yourself with a life gone by. This exclusive setting is the perfect place to partake of a continental breakfast, a selection of afternoon snacks, or the restaurant's signature dishes in the evening. Whatever you choose, you can enjoy the utmost privacy in a relaxed setting dedicated to a wealth of art and culture.



A simple tile pattern created out of basic shapes interlaced together in a fashion that creates a beautiful symmetrical whole. The touch of the tile adds elements with more balance and fluidity to the overall design.